

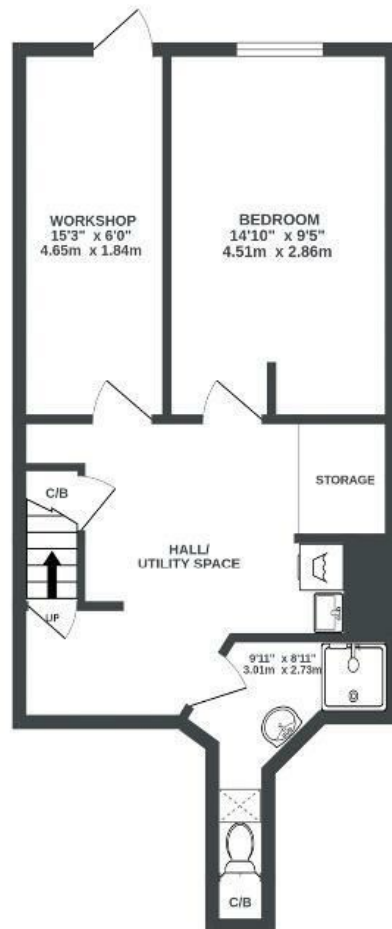
Henry Street

TOTTERDOWN

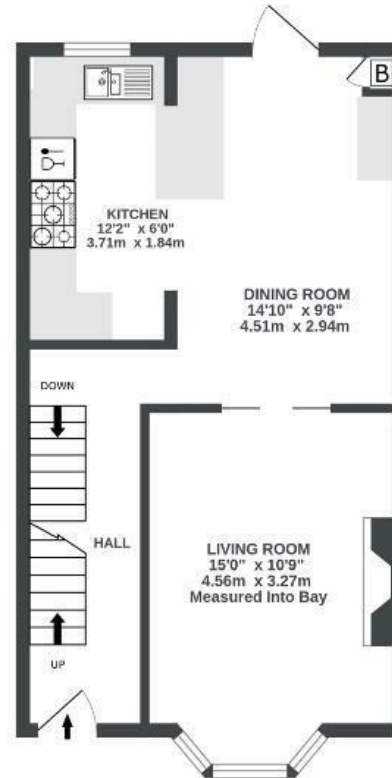
APPROXIMATE FLOOR AREA
125 SQM / 1346 SQFT



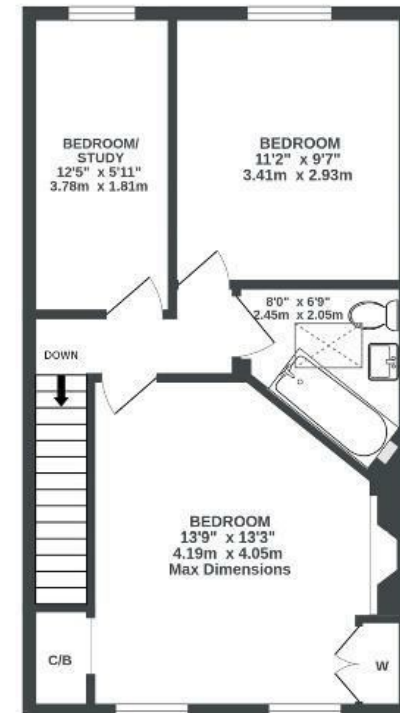
LOWER GROUND FLOOR
450 sq.ft. (41.8 sq.m.) approx.



GROUND FLOOR
448 sq.ft. (41.6 sq.m.) approx.



1ST FLOOR
448 sq.ft. (41.6 sq.m.) approx.



Illustrations are for reference purposes only, measurements are approximate, not to scale.

Boardwalk

Henry Street

TOTTERDOWN, BRISTOL

£

£500,000

zzz

4 Bedrooms



Bristol, BS3

4UD



2 Bathrooms

'We have loved living on Henry Street, being just around the corner from Victoria Park is fantastic when you have children, or just want to go out for a morning jog. We will really miss going to the incredible Sundial Kitchen for brunch which is literally just around the corner.'

